

Meeting Room	DIMENSIONS		CAPACITY					
	LxWxH	Sq. Ft.	Theater	Schoolroom	Conference	U-Shape	Reception	Banquet
Marquis Ballroom	111 x 132 x 24	14,626	1,280	970	–	–	1,200	980
Salons 1, 3, 6 & 8 (each)	37 x 33 x 24	1,235	112	50	28	35	100	60
Salons 2 & 7 (each)	36 x 33 x 24	1,188	112	50	28	35	100	60
Salons 4 & 5 (each)	111 x 33 x 24	3,655	360	192	–	–	300	180
Salons 1-4 & 5-8	111 x 66 x 24	7,313	600	410	–	–	600	450
Salons 1-2, 2-3, 6-7 or 7-8	73 x 33 x 24	2,423	200	120	40	48	150	120
Grand Ballroom (combined)	176 x 87 x 23	14,409	1,250	800	–	–	1,000	900
Ballroom A & E (each)	49 x 56 x 23	2,716	260	102	44	56	200	120
Ballroom B & D (each)	39 x 56 x 23	1,989	200	102	44	56	200	120
Ballroom C	81 x 39 x 23	3,116	325	186	64	76	250	200
Ballroom C, Corridors	68 x 87 x 23	4,998	400	260	–	–	350	300
Valencia Ballroom	111 x 111 x 38	12,320	–	–	–	–	1,000	570
Upper Level	95 x 95 x 38	8,954	750	500	–	–	935	450
Lower Level	210 x 16 x 14	3,366	–	–	–	–	165	120
Cataluna Room (combined)	46 x 38 x 12	1,732	198	96	40	48	150	90
Cataluna Room A	40 x 24 x 12	943	80	50	28	34	90	40
Cataluna Room B	40 x 24 x 12	789	50	42	28	32	80	40
Cabrera	–	200	–	–	10	–	–	10
Castilla	35 x 22 x 12	772	60	30	28	30	60	40
Galicia	21 x 21 x 12	426	25	18	16	16	40	20
Navarra	21 x 21 x 12	425	25	16	16	16	40	20
Andalucia	29 x 33 x 12	925	72	42	20	32	70	50
Murcia	29 x 33 x 12	932	72	42	20	32	70	50
Madrid Room	26 x 16 x 12	570	45	33	18	20	60	40
Leon	26 x 23 x 17	611	45	24	18	20	60	40
Aragon	26 x 24 x 17	611	42	24	18	20	50	40
Sevilla	21 x 23 x 12	483	24	18	15	16	40	30

### Accommodations

548 luxurious guestrooms • 79 luxury guest suites. All guestrooms feature: whirlpool bathtubs and separate shower with a raindrop showerhead, plush bathrobes, walk-in closets, dual-line telephones for modem or fax at desk and bed, high speed internet, personalized voicemail, email and guest services via the television, private safe, coffee & tea maker, iron and ironing board. For the benefit of everyone, the resort features smoke free guestrooms.

### Guest Services

24 hour valet parking • Full service Business Center and Executive Board Room • over 100,000 sq. ft. of Conference space with 32 function rooms • Hertz Car Rental service • Regularly scheduled complementary shuttle service to the Strip • In-room dining

### Restaurants & Lounges

**221** Social Food, Modern Drinks • **Ceres** A fresh twist on American classical fare • **J.C. Wooloughan** Authentic Irish Pub serving traditional fare • **Shizen** Japanese cuisine, sushi, and teppanyaki • **Spiedini** **Restorante** Milanese and urban Italian cuisine • **Carmel Room** Upscale Continental cuisine with Mediterranean influence • **Waterside Café** Poolside beverage and light lunch • **Starbucks®** • **Promenade Café** Overlooking the excitement of the casino, open 24 hours a day • **Rampart Buffet** Open for lunch and dinner, featuring dishes from around the world

### Recreation & Leisure

**Casino** 1,200 slot machines and 40 gaming tables • **Aquae Sulis Spa** European Spa & Salon with 36 treatment rooms, full service salon, Whirlpools, steam saunas, hydrotherapy pool, bathing chambers, Watsu tubs and waterfall showers, 11,000 sq. ft. state-of-the-art fitness center, 2,000 sq. ft. Motion Studio featuring aerobic, Pilates, and yoga classes • **Pool** private cabanas, secluded pools and Waterside Café • **Activities** Bocce Ball, Volleyball, Mountain Bike Rentals

### Attractions

The Las Vegas Strip • Fashion Show Mall • Springs Preserve • Red Rock Canyon National Preserve • Las Vegas Motor Speedway • Hoover Dam and Lake Mead • Lied Discovery Children's Museum • Tivoli Shopping and Entertainment Complex

### JW Marriott® Las Vegas Resort & Spa

221 N. Rampart Blvd.  
Las Vegas, NV 89145

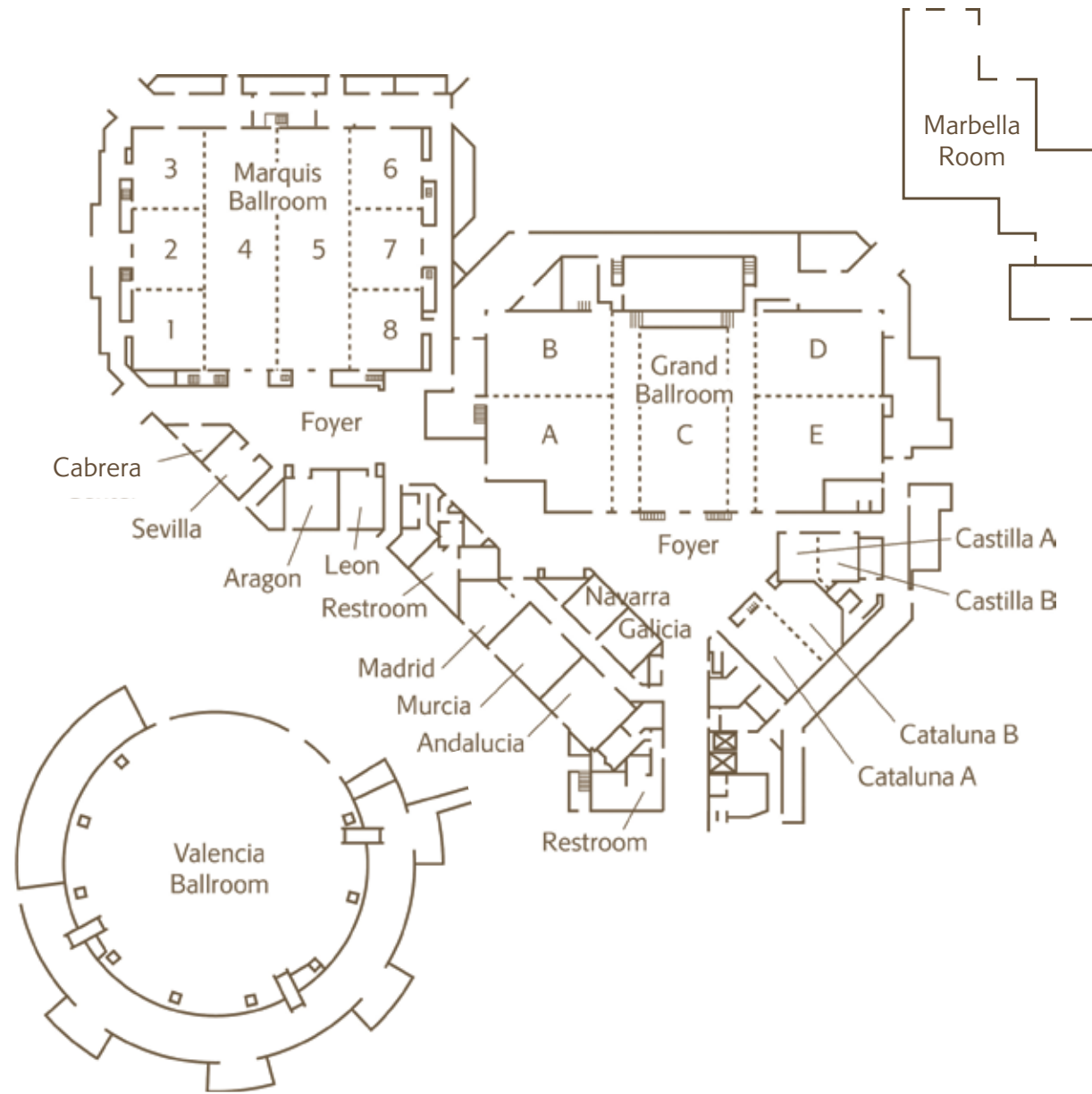
Phone 702-869-7777  
Toll free 877.869.8777

[jwlasvegasresort.com](http://jwlasvegasresort.com)

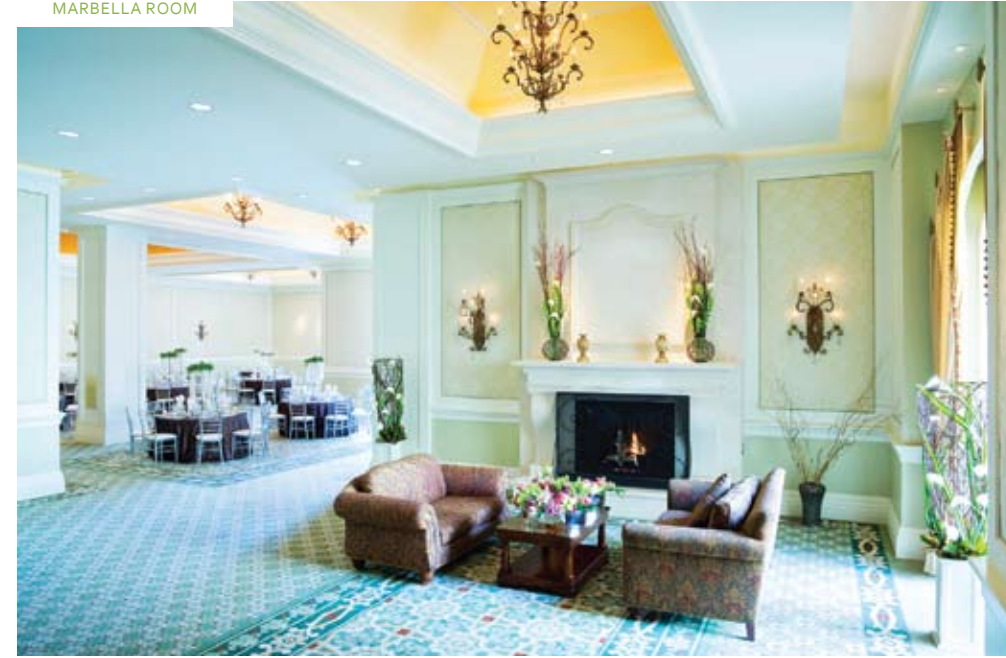
© 2011 Marriott International, Inc.

Conventions...in an Unconventional Las Vegas Style.





MARBELLA ROOM

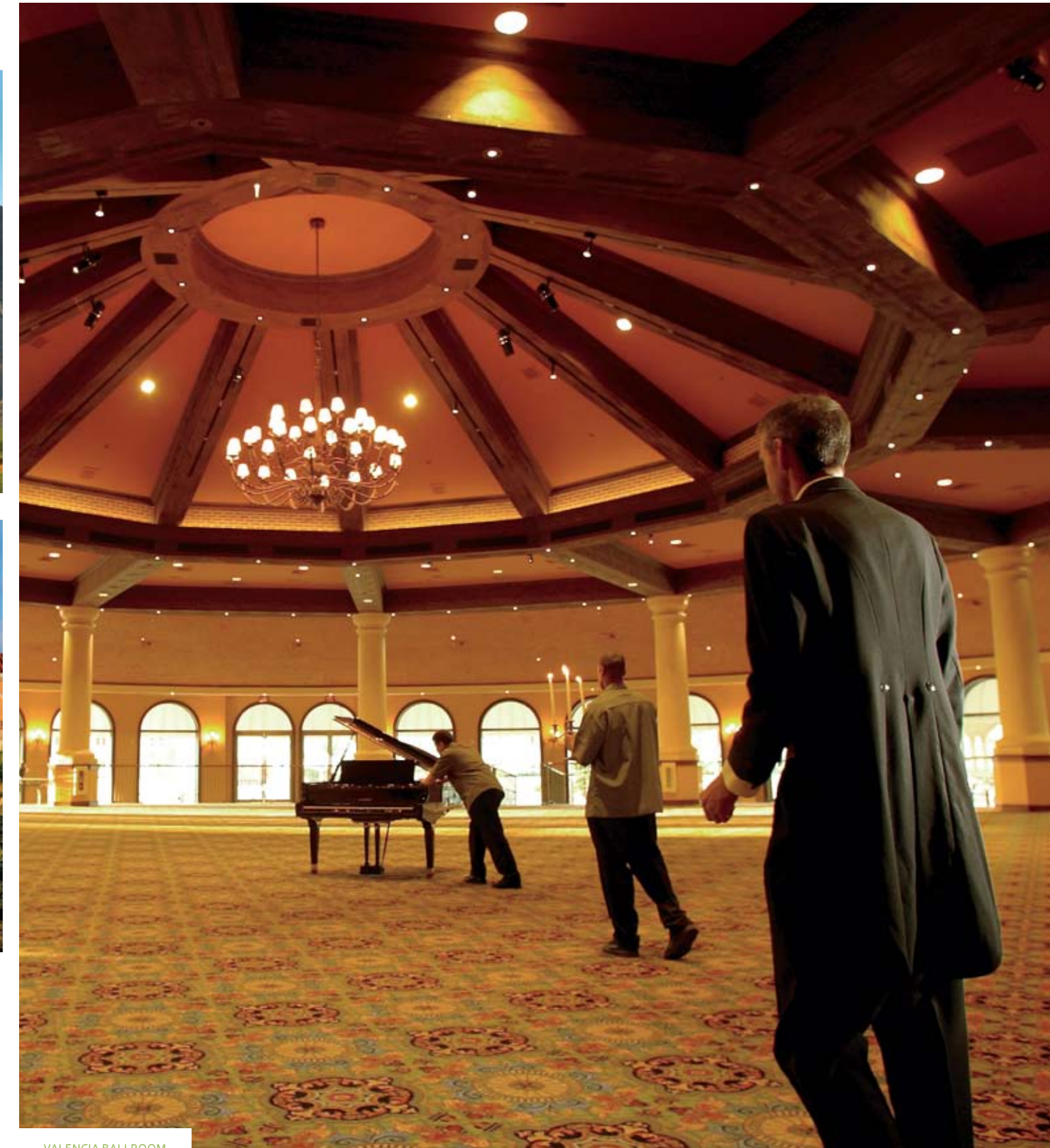


TPC LAS VEGAS

ZEN GARDEN



PALMS TOWER



VALENCIA BALLROOM

Meeting Room	DIMENSIONS		CAPACITY					
	LxWxH	Sq. Ft.	Theater	Schoolroom	Conference	U-Shape	Reception	Banquet
Suite 3100 (Spa Tower)	30 x 30 x 12	900	80	45	24	25	80	50
Suite 3200 (Palm Tower)	30 x 30 x 12	900	80	45	24	25	80	50
Suite 6100 (Spa Tower)	16 x 30 x 12	480	-	-	15	-	-	-
Suite 6200 (Palm Tower)	-	2,973	85	56	22	25	150	60
Harvest	16 x 23 x 10	368	-	-	13	-	-	-
Parian	75 x 75 x 10	5,625	-	-	-	-	220	200
Parian Boardroom	35 x 14 x 12	490	-	-	24	-	-	-
Parian Loggia	40 x 18 x 16	720	60	33	30	-	100	40
The Lodge at the Lawn (indoors)	25 x 20 x 22	500	33	24	26	-	60	40
Tazza's	60 x 48	2,880	-	-	-	-	150	70

**An Inviting Itinerary.**

At the JW Marriott Las Vegas, group travelers can enjoy as much - or as little - of the traditional Vegas experience as they desire. Soothing waterfalls and lush gardens set the scene for productive retreats including extraordinary indoor/outdoor function space, presentation technology and an impressive catering division. When

meetings adjourn, the doors open to a diverse menu of opportunities where attendees can choose to enjoy the abundant amenities of this remarkable resort or explore all that's alluring in Las Vegas. The JW Marriott Las Vegas is the ideal group getaway - blending luxurious meeting space, respite and easy access to the action in the city.